

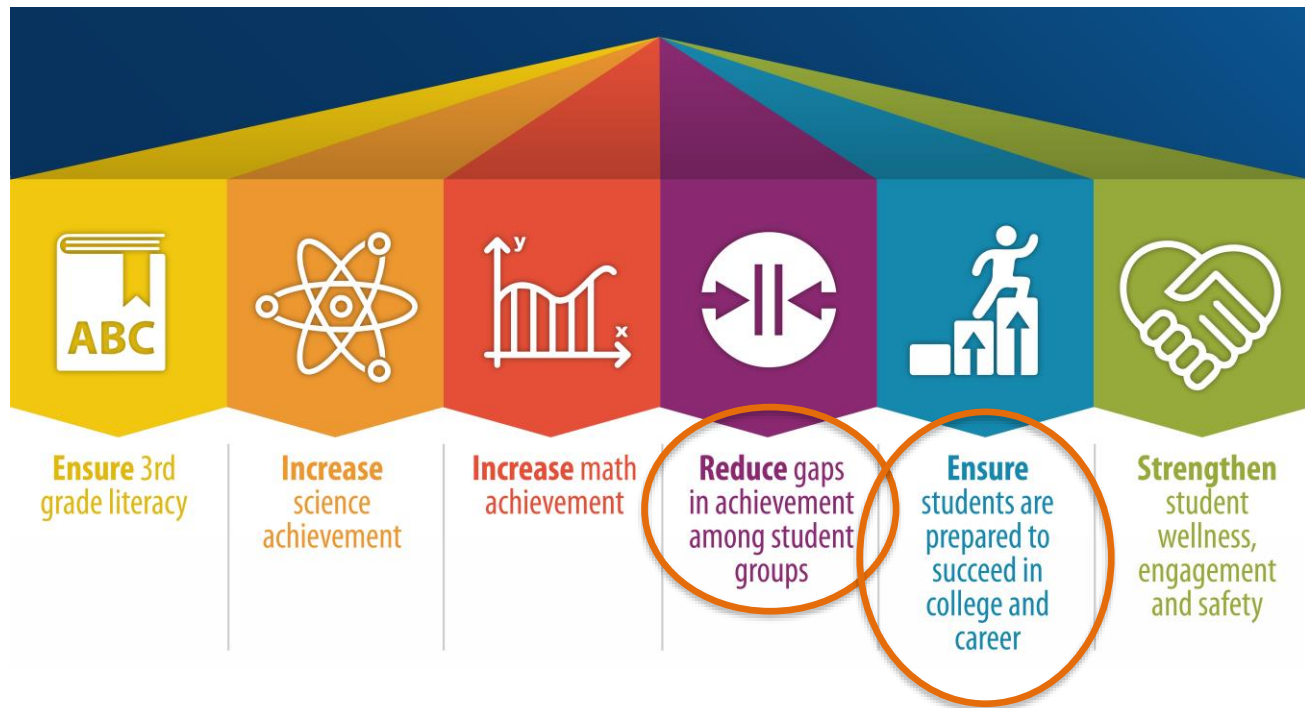
# OTG 101

EVERETT PUBLIC SCHOOLS

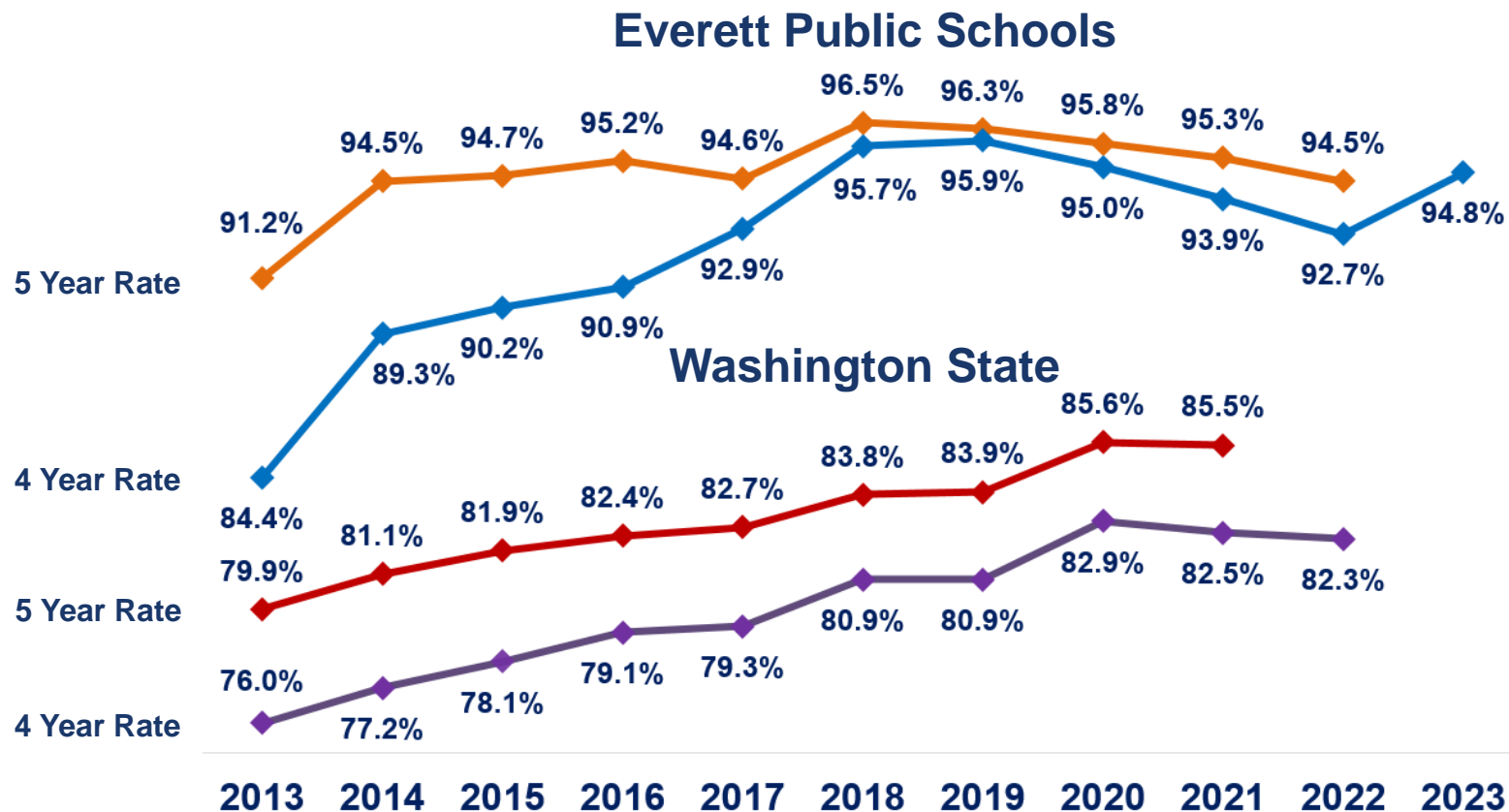
November 2023



# Strategic Plan Priority Student Outcomes



# Graduation Rates, Classes of 2013 – 2023



## OTG means “on-time graduation” . . .

to graduate students within four years . . .

to support students before high school, through the transition to and through high school, and through the finish line of graduation . . .

to support students to reach their postsecondary goals.



# How is a graduation rate calculated?

**Graduates**

---

**Graduates**

+

**Active Students**

Continuing Seniors and 18-21 Year Old Transition Program Students

+

**Inactive Students**

“CDU”s and Unconfirmed Transfers

—

**Confirmed Transfers**

Confirmed Transfers to Other Schools or Programs that offer High School Diplomas

Confirmed Transfers to Home School

Confirmed Transfers to 1418 Open Doors Programs (Graduation Alliance and EvCC U3)



# When is a graduation rate calculated?

The graduation rate is calculated four times for each class of students (FGY):

## On-time graduation rate

**4 Year Graduation Rate** = 4 years after students started ninth grade

## Extended graduation rates

**5 Year Graduation Rate** = 5 years after students started ninth grade

**6 Year Graduation Rate** = 6 years after students started ninth grade

**7 Year Graduation Rate** = 7 years after students started ninth grade

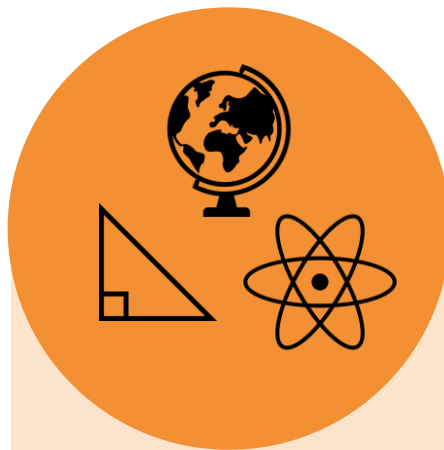
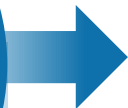


# What are the graduation requirements?



## High School & Beyond Plan

- Each year through Naviance, starting in sixth grade
- Culminates in College and Career Readiness Seminar
- Includes high school and postsecondary planning



## Credit & Subject Area Requirements

- 17 core credits
- 3 Personalized Pathway Requirements (flexible credits)
- 4 elective credits, including College and Career Readiness Seminar

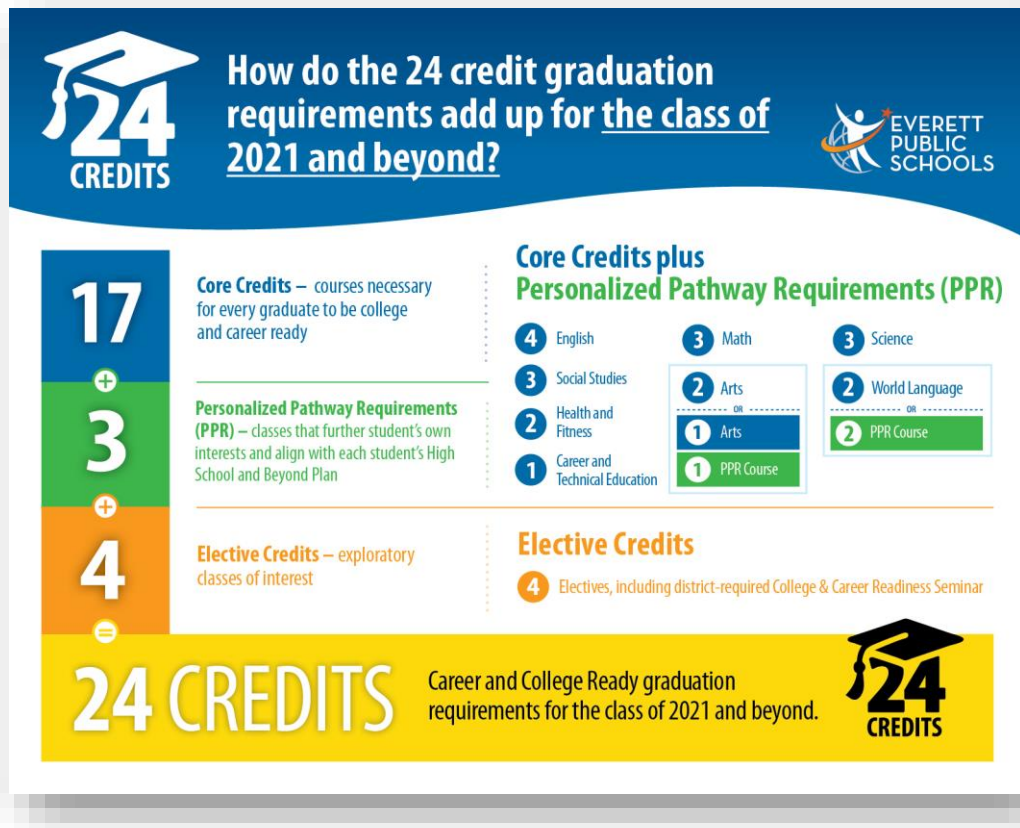


## Graduation Pathway Options

- Options to demonstrate postsecondary readiness in English Language Arts and Math through tests and courses



# What are the graduation requirements?





# Waivers Available for the 2023-24 School Year

- There are two waivers available for students graduating in the 2023-24 school year
  - GREW Waiver: Up to one core credit may be waived
  - Academic Waiver: Up to two elective credits may be waived
- There is not a waiver available for the graduation pathway for the 2023-24 school year.
- The GREW waiver is scheduled to end with the 2023-24 school year.



	Math	English Language Arts (ELA)
State Assessments	✓	✓
Dual Credit	✓	✓
AP Courses and Exams	✓	✓
SAT College Entrance Exam	✓	✓
Bridge to College Math	✓	
<b>Performance-based</b>	<b>In Progress</b>	<b>In Progress</b>
Armed Services Vocational Aptitude Battery (ASVAB)	✓ Combination Math and ELA	
Career and Technical (CTE) Pathway	✓ Combination Math and ELA	





## GRADUATION PATHWAYS

Students must meet one math and one English Language Arts (ELA) Graduation Pathway as defined in the High School and Beyond Plan.

### MATH PATHWAY

#### State Assessment Math Pathway

Meet standard on the math SBA (minimum score: 2595) or meet standard on math WA-AIM (minimum score: 103)

#### Dual Credit Math Pathway

Complete and qualify for college credit in a year-long dual credit math course:

- Calculus
- Intro to Data Science
- Precalculus
- Running Start Math class (100-level or above)
- Statistics

#### Advanced Placement Math Pathway

Earn a C+ or higher in both semesters of a qualifying Advanced Placement (AP) math course OR score a 3 or higher on a qualifying AP math exam:

- AP Calculus AB or BC
- AP Computer Science A
- AP Computer Science Principles
- AP Statistics

#### Transition Course Math Pathway

Earn transition course credit in Bridge to College Math

#### SAT/ACT Math Pathway

Meet standard on the SAT (430) or ACT (16) in math

#### Performance-based Math Pathway

Meet state requirements and demonstrate math learning standards

#### ASVAB Pathway

Meet standard on the Armed Services Vocational Aptitude Battery (ASVAB) (Minimum AFQT: 31)  
This pathway meets both math and ELA graduation pathways

#### Career Technical Education (CTE) Pathway

Complete a qualifying sequence of career and technical education (CTE) courses  
This pathway meets both math and ELA requirements

Must earn 2.0 credits in one of the following pathways:

- Agriculture Education & Science
- Business & Marketing
- Family & Consumer Sciences
- Health Sciences
- Skilled & Technical Sciences
- Skill Center Programs (Sno-Isle Tech, Regional Apprenticeship Program (RAP))
- STEM

### ELA PATHWAY

#### State Assessment ELA Pathway

Meet standard on the ELA SBA (Minimum score: 2548) or meet standard on the ELA WA-AIM (minimum score: 104)

#### Dual Credit ELA Pathway

Complete and qualify for college credit in a year-long dual credit ELA course:

- English 4
- Running Start English class (100-level or above)
- UW English Comp: General
- UW English Comp: Humanities
- UW English Comp: Literary

#### Advanced Placement ELA Pathway

Earn a C+ or higher in both semesters of a qualifying Advanced Placement (AP) ELA course OR score a 3 or higher on a qualifying AP ELA exam:

- AP English Lang & Comp
- AP English Lit & Comp
- AP Macroeconomics
- AP Microeconomics
- AP Psychology
- AP US Gov & Politics
- AP US History
- AP World History

#### SAT/ACT ELA Pathway

Meet standard on the SAT (410) or ACT (14) in reading, writing, or English

#### Performance-based ELA Pathway

Meet state requirements and demonstrate ELA learning standards

## Career & Technical Education (CTE)

### Course Options by CTE Pathway

#### Agriculture Education & Science

- ☐ AP Environmental Science (page 51)
- ☐ Biology and the Environment (page 51)
- ☐ Sustainable Agriculture (page 55)
- ☐ College & Career Readiness Seminar (CCRS) or Career Choices

#### Business & Marketing

- ☐ Accounting I & II
- ☐ AP Computer Science A
- ☐ AP Computer Science Principles
- ☐ AP Macroeconomics/AP Microeconomics
- ☐ Business & Finance
- ☐ Business Law
- ☐ Business Operations
- ☐ Cybersecurity & Networking
- ☐ Economics
- ☐ Entrepreneurship
- ☐ Foundations of Business and Marketing
- ☐ Introduction to Law (page 60)
- ☐ Introduction to Programming I & II (formerly called Computer Programming through Graphics and Animation I, II)
- ☐ Microsoft Office User Specialist (formerly called Computer Applications)
- ☐ Publications I, II, III, IV
- ☐ Social Media Marketing
- ☐ Web Design
- ☐ Worksite Learning Experience/Volunteer
- ☐ CCRS or Career Choices

#### Family & Consumer Sciences

- ☐ AP Psychology (page 60)
- ☐ Child Development
- ☐ Family Health
- ☐ FCS Ed Coop
- ☐ Independent Living
- ☐ Introduction to Education
- ☐ Nutrition & Food Prep 1 & 2
- ☐ Nutrition and Wellness
- ☐ CCRS or Career Choices

#### Health Sciences

- ☐ Anatomy & Physiology (page 53)
- ☐ Biotechnology (page 54)
- ☐ Biomanufacturing (page 54)
- ☐ Cybersecurity & Networking
- ☐ Home Care Aide
- ☐ Intro to Health Science Careers
- ☐ Medical Terminology
- ☐ Sports Medicine I & II
- ☐ CCRS or Career Choices

#### Skilled & Technical Sciences

- ☐ AP 2-D/3-D Art and Design (page 64)
- ☐ AP Drawing (page 64)
- ☐ Automotive Maintenance
- ☐ Automotive Technology
- ☐ Digital Photography I, II
- ☐ Foundations of Manufacturing
- ☐ Graphic Design Intro, I, II, III
- ☐ NURITC I, II, III & IV
- ☐ Robotics and Mechatronics
- ☐ Robotics Tech (page 55)
- ☐ Technical Theatre I, II, III (pages 65-66)
- ☐ Video Game Design I
- ☐ Video Production I, II, III
- ☐ CCRS or Career Choices

#### STEM

- ☐ AP Physics 1 (page 52)
- ☐ Astronomy & Aerospace Engineering (page 54)
- ☐ Engineer Your World (page 53)
- ☐ Physics in the Universe (page 54)
- ☐ CCRS or Career Choices

#### Skill Center Programs

- ☐ Sno-Isle TECH (page 88)



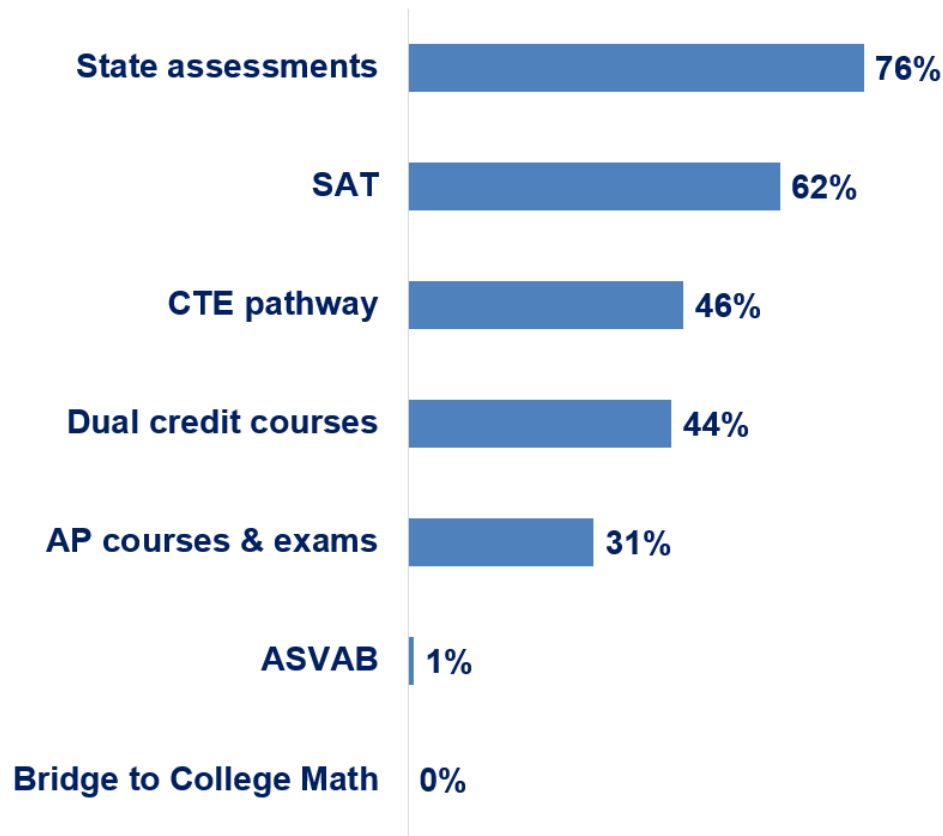
# Status of Graduation Pathways

Currently, **68%** of seniors have met **both the Math and the ELA graduation pathways.**

20% have met one pathway.

12% have not met any pathway.

Many students meet through multiple pathway options.



# Performance-based Pathway as “Flexible” Option

- Allows students to “**show**” what they know and can do in real-world, hands-on ways that align with their High School & Beyond Plan
- Key words to describe this option are “**customizable**” and “**flexible**”
  - May take a variety of forms such as project, practicum, work-related experience, community service, cultural activity
  - May result in a variety of student work that can be evaluated such as performance, presentation, portfolio, report, film, exhibit
  - May or may not be completed as part of a class where a student also earns credit



# Graduation Requirements for Students with IEPs

IEP teams **are not able** to create new graduation pathways nor to waive graduation requirements for students receiving special education services.

To support students with disabilities in meeting graduation requirements, IEP teams may utilize **comparable content course substitutions**, as identified in the IEP course of study and aligned with the student's High School and Beyond Plan.

[State Board of Education Graduation Requirements](#)



# What is the “priority cohort report?”

15

The **priority cohort report** is an automated spreadsheet that provides a comprehensive list of students, status and demographics, and information on graduation requirements.

It’s a “**one stop shop**” for tracking students.

1	Yea	J	K	L	M	N	O	P	Q	R	S	T	U
1	Yea	J	K	L	M	N	O	P	Q	R	S	T	U
1	Yea	J	K	L	M	N	O	P	Q	R	S	T	U
1	Yea	J	K	L	M	N	O	P	Q	R	S	T	U
1	Yea	J	K	L	M	N	O	P	Q	R	S	T	U
1	Yea	J	K	L	M	N	O	P	Q	R	S	T	U
1	Yea	J	K	L	M	N	O	P	Q	R	S	T	U
1	Yea	J	K	L	M	N	O	P	Q	R	S	T	U
1	Yea	J	K	L	M	N	O	P	Q	R	S	T	U
1	Yea	J	K	L	M	N	O	P	Q	R	S	T	U
1	Yea	J	K	L	M	N	O	P	Q	R	S	T	U
1	Yea	J	K	L	M	N	O	P	Q	R	S	T	U
1	Yea	J	K	L	M	N	O	P	Q	R	S	T	U
1	Yea	J	K	L	M	N	O	P	Q	R	S	T	U
1	Yea	J	K	L	M	N	O	P	Q	R	S	T	U
1	Yea	J	K	L	M	N	O	P	Q	R	S	T	U
1	Yea	J	K	L	M	N	O	P	Q	R	S	T	U
1	Yea	J	K	L	M	N	O	P	Q	R	S	T	U
1	Yea	J	K	L	M	N	O	P	Q	R	S	T	U
1	Yea	J	K	L	M	N	O	P	Q	R	S	T	U
1	Yea	J	K	L	M	N	O	P	Q	R	S	T	U
1	Yea	J	K	L	M	N	O	P	Q	R	S	T	U
1	Yea	J	K	L	M	N	O	P	Q	R	S	T	U
1	Yea	J	K	L	M	N	O	P	Q	R	S	T	U
1	Yea	J	K	L	M	N	O	P	Q	R	S	T	U
1	Yea	J	K	L	M	N	O	P	Q	R	S	T	U
1	Yea	J	K	L	M	N	O	P	Q	R	S	T	U
1	Yea	J	K	L	M	N	O	P	Q	R	S	T	U
1	Yea	J	K	L	M	N	O	P	Q	R	S	T	U
1	Yea	J	K	L	M	N	O	P	Q	R	S	T	U
1	Yea	J	K	L	M	N	O	P	Q	R	S	T	U
1	Yea	J	K	L	M	N	O	P	Q	R	S	T	U
1	Yea	J	K	L	M	N	O	P	Q	R	S	T	U
1	Yea	J	K	L	M	N	O	P	Q	R	S	T	U
1	Yea	J	K	L	M	N	O	P	Q	R	S	T	U
1	Yea	J	K	L	M	N	O	P	Q	R	S	T	U
1	Yea	J	K	L	M	N	O	P	Q	R	S	T	U
1	Yea	J	K	L	M	N	O	P	Q	R	S	T	U
1	Yea	J	K	L	M	N	O	P	Q	R	S	T	U
1	Yea	J	K	L	M	N	O	P	Q	R	S	T	U
1	Yea	J	K	L	M	N	O	P	Q	R	S	T	U
1	Yea	J	K	L	M	N	O	P	Q	R	S	T	U
1	Yea	J	K	L	M	N	O	P	Q	R	S	T	U
1	Yea	J	K	L	M	N	O	P	Q	R	S	T	U
1	Yea	J	K	L	M	N	O	P	Q	R	S	T	U
1	Yea	J	K	L	M	N	O	P	Q	R	S	T	U
1	Yea	J	K	L	M	N	O	P	Q	R	S	T	U
1	Yea	J	K	L	M	N	O	P	Q	R	S	T	U
1	Yea	J	K	L	M	N	O	P	Q	R	S	T	U
1	Yea	J	K	L	M	N	O	P	Q	R	S	T	U
1	Yea	J	K	L	M	N	O	P	Q	R	S	T	U
1	Yea	J	K	L	M	N	O	P	Q	R	S	T	U
1	Yea	J	K	L	M	N	O	P	Q	R	S	T	U
1	Yea	J	K	L	M	N	O	P	Q	R	S	T	U
1	Yea	J	K	L	M	N	O	P	Q	R	S	T	U
1	Yea	J	K	L	M	N	O	P	Q	R	S	T	U
1	Yea	J	K	L	M	N	O	P	Q	R	S	T	U
1	Yea	J	K	L	M	N	O	P	Q	R	S	T	U
1	Yea	J	K	L	M	N	O	P	Q	R	S	T	U
1	Yea	J	K	L	M	N	O	P	Q	R	S	T	U
1	Yea	J	K	L	M	N	O	P	Q	R	S	T	U
1	Yea	J	K	L	M	N	O	P	Q	R	S	T	U
1	Yea	J	K	L	M	N	O	P	Q	R	S	T	U
1	Yea	J	K	L	M	N	O	P	Q	R	S	T	U
1	Yea	J	K	L	M	N	O	P	Q	R	S	T	U
1	Yea	J	K	L	M	N	O	P	Q	R	S	T	U
1	Yea	J	K	L	M	N	O	P	Q	R	S	T	U
1	Yea	J	K	L	M	N	O	P	Q	R	S	T	U
1	Yea	J	K	L	M	N	O	P	Q	R	S	T	U
1	Yea	J	K	L	M	N	O	P	Q	R	S	T	U
1	Yea	J	K	L	M	N	O	P	Q	R	S	T	U
1	Yea	J	K	L	M	N	O	P	Q	R	S	T	U
1	Yea	J	K	L	M	N	O	P	Q	R	S	T	U
1	Yea	J	K	L	M	N	O	P	Q	R	S	T	U
1	Yea	J	K	L	M	N	O	P	Q	R	S	T	U
1	Yea	J	K	L	M	N	O	P	Q	R	S	T	U
1	Yea	J	K	L	M	N	O	P	Q	R	S	T	U
1	Yea	J	K	L	M	N	O	P	Q	R	S	T	U
1	Yea	J	K	L	M	N	O	P	Q	R	S	T	U
1	Yea	J	K	L	M	N	O	P	Q	R	S	T	U
1	Yea	J	K	L	M	N	O	P	Q	R	S	T	U
1	Yea	J	K	L	M	N	O	P	Q	R	S	T	U
1	Yea	J	K	L	M	N	O	P	Q	R	S	T	U
1	Yea	J	K	L	M	N	O	P	Q	R	S	T	U
1	Yea	J	K	L	M	N	O	P	Q	R	S	T	U
1	Yea	J	K	L	M	N	O	P	Q	R	S	T	U
1	Yea	J	K	L	M	N	O	P	Q	R			



# What is “RYG?”

RYG means Red – Yellow – Green . . .

RYG refers to the number of credits to graduation.

**Red** means a student is far behind in credits.

**Yellow** means a student is a little behind in credits.

**Green** means the student is “on-track” in terms of credits.

RYG does not mean that the student has the right credits in the right “buckets” or has met their Graduation Pathway or has completed their High School and Beyond Plan.





## FGY means Federal Graduation Year . . .

FGY is a term used in Everett Public Schools for a federal requirement.

A student is assigned an FGY when they start ninth grade.

The FGY is four years from when a student enters ninth grade at a public U.S. school.

The FGY cannot be changed, unless there is an error or the student is placed in an FGY based on the transcript review process.

Only **Jeanne** updates an FGY.



## CDU means “dropout” . . .

The C, D, and U withdrawal codes count as dropouts in the graduation rate.

The “C1” withdrawal code means that a student earned their GED and is no longer enrolled. A GED is not counted towards graduation.

The “U3” withdrawal code means that the student or family has reported that they are moving out of the district, but it is an unconfirmed transfer until the receiving school sends a records request or documentation verifying that the student is enrolled in the new school.



# Questions?

